

# CONTRACTOR RANGE

---

## PSKLM ENCLOSURES

---



**PEEKN  
SERVICES**

**Industrial Electrical  
& IT Solutions**

Heathcote, NSW, 2233  
Business Reg: BN98476366  
ABN:15 924 167 896

[sales@peeknservices.com.au](mailto:sales@peeknservices.com.au)

**Tel: 0448 085 061**

**06:30 ~ 20:30 7 Days**

**Cost effective enclosure solutions for  
domestic, commercial & industrial  
applications**

## PSKLM ENCLOSURE SPECIFICATIONS

### Features:

- Fully welded mild steel body.
- Lid c/- foamed in PU seal & fixing screws
- Rear of enclosure prepared for wall mounting
- Integrated tapped rails for Mounting Plate or DIN Rail
- IP 66 rated
- Mounting plate available as an accessory
- Wall mounting brackets available as accessories.

### Degree of protection:

- Complies with IEC60529, EN60529/10.91 & GB4208-93 standards.
- Rated to IP66
- Impact rating IK10

### Material:

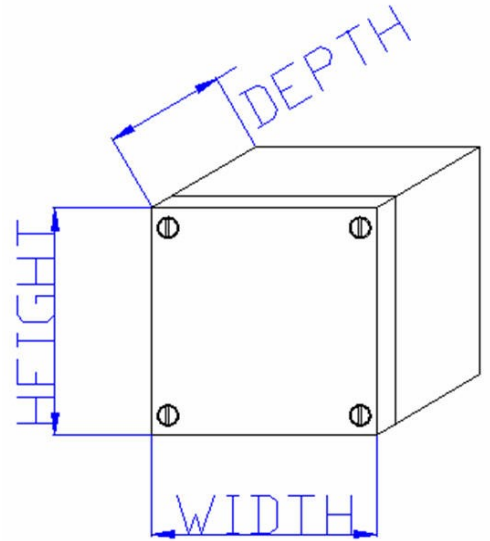
- 1.2mm mild steel
- Thickness – Mounting plate, 2mm ?

### Surface finish:

- Epoxy polyester textured powder coating – RAL 7032

## PSKLM ENCLOSURE SIZES

PART #	Width	Height	Depth	Mounting Plate
PSKLM151508	150	150	80	PSKLMP11
PSKLM151512	150	150	120	PSKLMP11
PSKLM201512	200	150	120	PSKLMP21
PSKLM202008	200	200	80	PSKLMP22
PSKLM202012	200	200	120	PSKLMP22
PSKLM301508	300	150	80	PSKLMP31
PSKLM301512	300	150	120	PSKLMP31
PSKLM302008	300	200	80	PSKLMP32
PSKLM302012	300	200	120	PSKLMP32
PSKLM401512	400	150	120	PSKLMP41
PSKLM402008	400	200	80	PSKLMP42
PSKLM403012	400	300	120	PSKLMP43
PSKLM404012	400	400	120	PSKLMP44
PSKLM502012	500	200	120	PSKLMP52
PSKLM503012	500	300	120	PSKLMP53
PSKLM602012	600	200	120	PSKLMP62
PSKLM603012	600	300	120	PSKLMP63
PSKLM802012	800	200	120	PSKLMP82
PSKLM804012	800	400	120	PSKLMP84



**See also**

***PSKLS Series – Stainless Steel enclosures***

***PSPK Series – Polycarbonate enclosures***

# ENCLOSURE PLUS RANGE

**PEEKN**  
**SERVICES**



	<b>Width</b>	<b>Height</b>	<b>Depth</b>
<b>ELTBM151580</b>	150	150	80
<b>ELTBM151512</b>	150	150	120
<b>ELTBM201512</b>	200	150	120
<b>ELTBM202080</b>	200	200	80
<b>ELTBM301580</b>	300	150	80
<b>ELTBM301512</b>	300	150	120
<b>ELTBM302080</b>	300	200	80
<b>ELTBM302012</b>	300	200	120
<b>ELTBM401512</b>	400	150	120
<b>ELTBM402080</b>	400	200	80
<b>ELTBM403012</b>	400	300	120
<b>ELTBM404012</b>	400	400	120
<b>ELTBM502012</b>	500	200	120
<b>ELTBM503012</b>	500	300	120
<b>ELTBM602012</b>	600	200	120
<b>ELTBM603012</b>	600	300	120
<b>ELTBM802012</b>	800	200	120
<b>ELTBM804012</b>	800	400	120

# EPR COMPONENTS

Take advantage of the complementary EPR Component range on offer with any purchase of “Enclosure Plus Range” products.

These components are available for use with our “Contractor Range” however a M.O.V. may apply.

CLIMATE CONTROL:	<ul style="list-style-type: none"> <li>- Heaters</li> <li>- Fan &amp; Filter systems</li> <li>- Hygro / Thermo stats etc</li> </ul>
CONTACTORS:	<ul style="list-style-type: none"> <li>- 2, 3 or 4 Pole, AC &amp; or DC Control</li> <li>- 9A ~ 1250A depending on Contactor</li> <li>- DIN Rail or Panel mounted versions available</li> <li>- Overloads, Auxiliaries, DOL Starters etc.</li> </ul>
PILOT DEVICES:	<ul style="list-style-type: none"> <li>- Push buttons, Selector Switches, Pilot lights</li> <li>- Enclosed push buttons, Emergency stop stations</li> <li>- Cam switches, 25 ~ 80A</li> </ul>
POWER DISTRIBUTION:	<ul style="list-style-type: none"> <li>- 2 / 3 / 4 Pole Isolators, Main Switches, MCB's, RCD's, RCCD's &amp; RCBO's etc.</li> <li>- DIN rail mounted or IP Rated enclosure solutions...</li> </ul>
PV SOLUTIONS:	<ul style="list-style-type: none"> <li>- Dedicated DC breakers, Isolators &amp; contactors</li> </ul>
RELAYS:	<ul style="list-style-type: none"> <li>- 1 / 2 / 3 or 4 Pole, Mechanical or Solid state.</li> <li>- 6A ~ 90A (depending on load type).</li> </ul>
TERMINAL BLOCKS:	<ul style="list-style-type: none"> <li>- 2.5 ~ 95mm (232A), DIN rail mounted, melamine, CT etc.</li> <li>- Feed through, multilevel, PCB mounted etc.</li> <li>- Earth &amp; Neutral links</li> </ul>
TIMERS:	<ul style="list-style-type: none"> <li>- Analogue, Digital &amp; Pneumatic</li> </ul>
WIRING ACCESSORIES:	<ul style="list-style-type: none"> <li>- Ducting, (Slotted or plain), wire wrap etc.</li> <li>- Cable glands, Hole plugs / Bushes, cable ties &amp; clips etc.</li> <li>- DIN Rail &amp; accessories, Insulators etc.</li> </ul>

# CONTRACTOR RANGE

**PEEKN  
SERVICES**



**PSPK RANGE  
POLYCARBONATE  
80 MODELS**



**PSKLM RANGE  
MILD STEEL  
19 MODELS**



**PSCE RANGE  
MILD STEEL  
27 MODELS**



**PSKLS RANGE  
STAINLESS STEEL  
18 MODELS**



**PSKS RANGE  
POLYESTER  
7 MODELS**



**PSTB RANGE  
MILD STEEL  
16 MODELS**

**PSSS RANGE  
STAINLES STEEL  
19 MODELS**



**PEEKN  
SERVICES**

Heathcote, NSW 2233

TEL: 0448 085 061

ABN 15 924 167 896

FAX: 02 9548 6818

[sales@peeknservices.com.au](mailto:sales@peeknservices.com.au)

[www.peaknservices.com.au](http://www.peaknservices.com.au)